

NEW



Tutor mobil 40

*Self-propelled transporter
for the handling of tube bundles*



CE

MADE IN ITALY

Tutor mobil 40

*For fast handling of the tube bundle
in a safe and secure mode*

MAUS ITALIA offers the **Tutor mobil 40** for the handling of tube bundles inside the plant, speeding up the loading and unloading operations of **Mefexpress** bundle extractors and the transport from the extraction point to the washing yard or maintenance workshop.





Nimble

Agile

The **Tutor mobil40** is an advanced 4x4 with front and rear driving and steering wheels which allow extremely tight turning radius and rapid positioning.



NO crane/truck

Independent

There is no need for a truck trailer to move the tube bundle inside the plant nor for a crane for loading or unloading.



NO damage

Protective

The **Tutor mobil40** surrounds and supports the tube bundle during handling and ensures that it is perfectly support along its longitudinal axis, thus eliminating the risk of damage to the baffles or crushing of the tubes.



Wireless

Freedom of movement

All handling, loading, unloading and adjustments are managed by wireless remote control which facilitates the movements of the operator.



Independent

Error compensation

Thanks to independent adjustable cables, the **Tutor mobil40** can compensate for any asymmetrical positioning errors of the lifting slings located underneath the tube bundle.



ATEX

Certificate

Upon request, the **Tutor mobile40** can be manufactured according to the ATEX directive in "explosion proof" configuration for use in environments with potentially explosive atmospheres.



Low temp

Not afraid of the cold

On request, the special version of the **Tutor mobil40** be supplied adapted to withstand low and extreme temperatures.



Customized

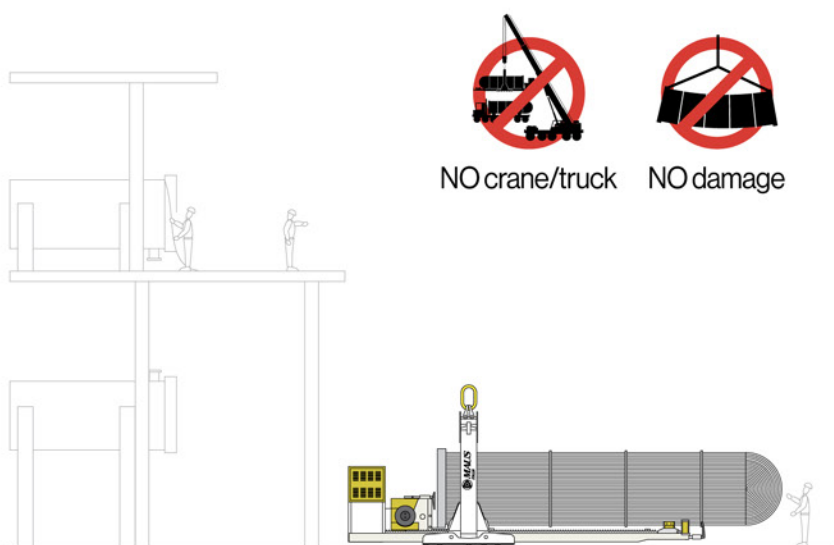
Adapts to need

On request, MAUS ITALIA can, after technical checks, design the **Tutor mobil** for different sizes and weight of bundles

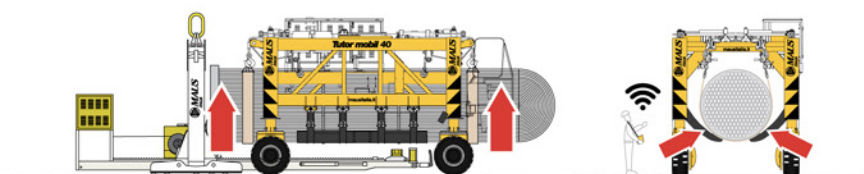


Tutor mobil 40

The **Tutor mobil 40** is used for handling tube bundles inside the plant in **combination** with a MAUS ITALIA **Mef express** series tube bundle extractor



- The **Tutor mobil 40** is easily aligned (thanks to the 4 driving and steering wheels) and goes over the top of the **Mef express** carrying the tube bundle which has just been extracted;

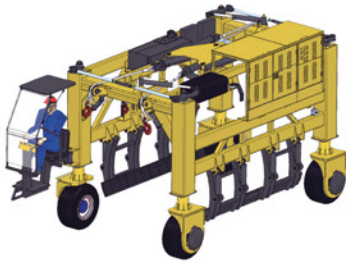


- using the sling supports which are controlled by independent cables, the **Tutor mobil 40** hooks the tube bundle and lifts it extremely carefully.

Working symmetrically, the jaws embrace and center the bundle ensure its balance along the longitudinal axis;

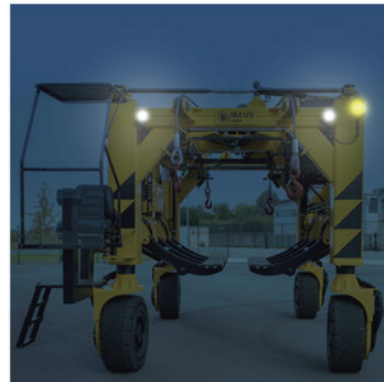


- the tube bundle is transported to its destination inside the plant and is unloaded in total safety for its intended maintenance without the aid of a lorry or crane.

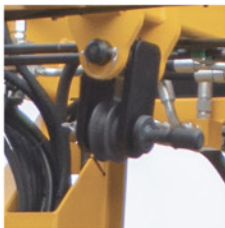


Each component is designed in 3D and verified in a virtual environment before being produced.

4 LED lights and 2 flashing warning lights front and rear



4 sheave blocks for loading short tube bundles



Steering system with convergence adjustment

Front and rear independent adjustable cables



Fuel tank

Engine unit



Removable driver's seat with remote control housing

Cut-resistant elastic tyres

When using the wireless remote control, the operator can choose whether to stay sitting comfortably in the driver's seat or walking alongside, accompany the **Tutormobil 40**.

Independent cushioning system on each wheel for uneven floor surfaces

2 symmetrical anti-oscillation and bundle support grippers



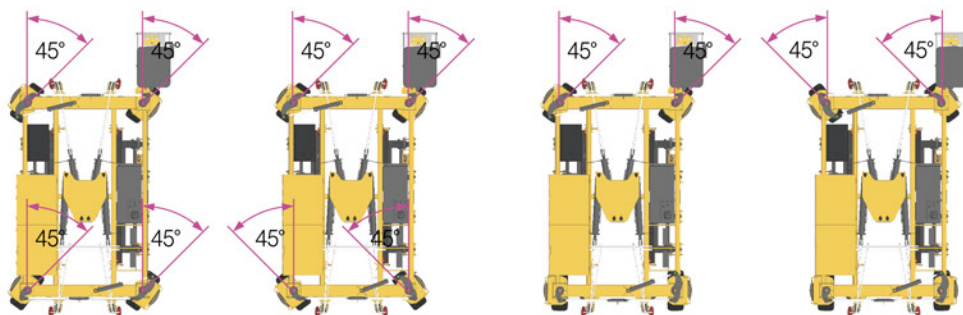
4 driving and steering wheels

Tutor mobil 40



Nimble

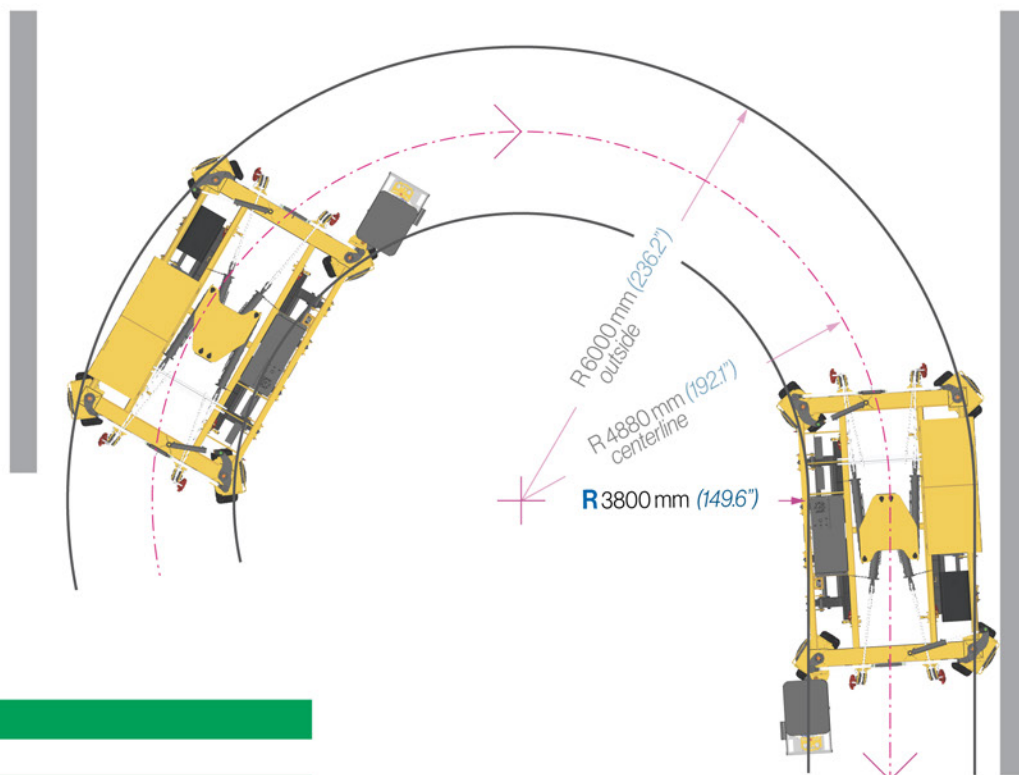
Extremely small turning circles



Special attention has been paid to the manoeuvrability of the **Tutormobil 40** with 4 driving and steering wheels, is able to navigate its way through the plant.



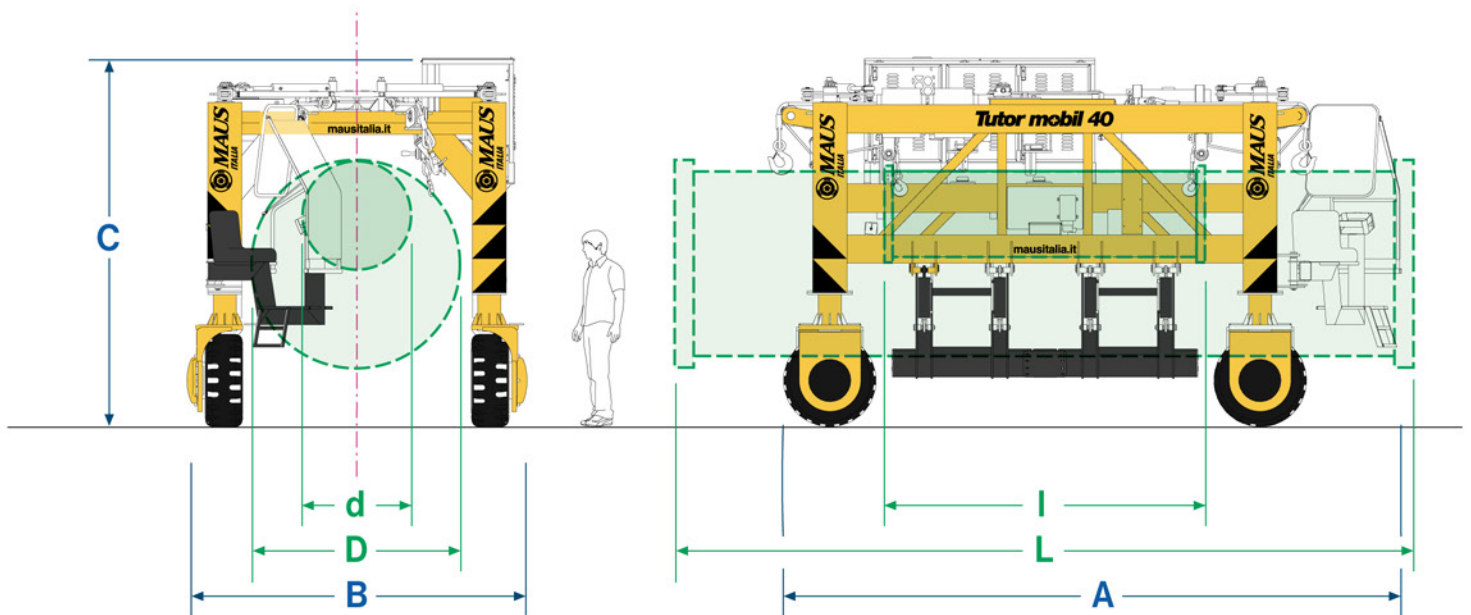
Wireless




Remote control

- Front drive and steering
- Speed adjustment
- Front lifting
- Rear lifting
- Rear steering
- Horn
- Emergency stop
- Engine rpm
- Open and close bundle support grippers
- Receiver connection activation
- Engine start and stop





Work capacity **Tutor mobil 40**

Ø bundle diaphragm (min.)	d	mm	inches	400	15.7
Ø bundle baffles (max.)	D	mm	inches	2000	78.7
Bundle length (min.)	I	mm	inches	2580	101.6
Bundle length (max.)	L	mm	inches	7500	295.3
Lifting capacity (max.)		T	lb	40	88000
No load speed (max.)		km/h	mph	7	4.3
Full load speed (max.)		km/h	mph	4	2.5
Minimum steering radius	R	mm	inches	3800	149.6
Steering of the 4 wheels (max.)				±45°	
Road slope (max.)				10%	

Dimensions **Tutor mobil 40**

Length	A	mm	ft	5490	18.0
Width	B	mm	ft	2720	8.9
Height	C	mm	ft	3260	10.7
Weight		T	lb	8,5	18700

Engine **Tutor mobil 40**

Model	JOHN DEERE - PowerTech™ PWL 4.5L Engine ★			
Ventilation	Aftercooler air-air			
Combustion system	Direct injection			
Cylinders	4			
Cylinder capacity	I	inches ³	4,5	275
Rated power	kW	HP	93	125
Noise @ 1m	dB(A)		92,5	
Emissions certifications	CARB EPA Tier 4 EU Stage IV			

★ or equivalent





MAUSITALIA S.P.A.
SP415 KM30 (nuova strada di arrocco)
26010 BAGNOLO CREMASCO (CR)
ITALIA

Tel. +39 0373 2370
expo@mausitalia.it

