



Onlypul

Semi-automated continuous hydraulic tube puller

Maintenance

Tube puller



A winning story since 1961

The Beginning

At the end of the 1950s, Domenico Franco Agostino became the Italian representative of Albert Otto, a German manufacturer of tube expanders. In 1961 Franco Agostino's Albert Otto Italiana was founded and in 1972, after purchasing an area of 10,000 square metres in the municipality of Bagnolo Cremasco, Maus Italia Sas was established.

The Growth

In 1976 his son Stefano, a mechanical engineer, joined the company. Together with his father, he studied products, introduced new machinery onto the market and filed the first patents by Maus Italia. Above all, Stefano was firmly convinced that people are the very heart of a company's success. Therefore, he invested in human capital by valuing people and roles, and he surrounded himself with skilled operators as well as technical, commercial and administrative collaborators. The result was a winning, competent and proactive team.

His daughter Anna - also a mechanical engineer - has been working in the company since 2016, giving new impetus and energy to the business her father and grandfather had built.

Father and daughter work together side by side every day to guarantee the excellence of Maus Italia and support all customers worldwide with competence and passion: the company's distinctive traits.



Stefano Agostino

CEO - Mechanical Engineer

Anna Agostino

COO - Mechanical and Management Engineer



In-house production of each component ***Workshop 4.0 and 24/7 production control***

The production of Maus Italia branded items is entirely carried out in Bagnolo Cremasco, in the heart of an Italian industrial area 30 km southeast of Milan.

The company boasts a 4.0 workshop equipped with state-of-the-art machinery, an in-house heat treatment room and a final inspection department that allow Maus Italia to independently manage every phase of the manufacturing process of its wide range of products whilst maintaining high quality standards.



Quality first. ***Design and development***

One of Maus Italia's strengths is its willingness to understand its customers' needs.

Our technical department is always ready to find operational solutions to the most complex applications, even via feasibility studies. We develop accurate work processes, draw with FEM analyses to verify our mechanical-structural performance and optimise the manufacturing process of each component.

Ready To Deliver

A well-stocked and complete warehouse of finished products enables Maus Italia ship quickly to customers all over the world according to a ready-to-deliver logic.

The warehouse is fully located within our premises in Bagnolo Cremasco at controlled temperatures and conditions to guarantee the maximum safety and quality of Maus Italia products for all our customers.

Quality, environment and safety policy

Research, quality and safety are the watchwords of Maus Italia Spa.

Maus Italia has several projects underway aimed at increasingly sustainable development and integrates environmental concerns into its business model. The company's actions, behaviour and development choices are focused not only on the short run but rather mainly on a medium and long-term horizon.



Every day in over ***80 country*** ***worldwide***

Find an official distributor
in your country





Onlypul

Semi-automated hydraulic tube puller for small-scale maintenance

Maus Italia semi-automated hydraulic tube pullers are the result of more than forty years of experience in the field of tube extraction. Onlypul is designed and built for semi-automated and continuous tube extraction.

It comes in four versions depending on the extraction force (Onlypul 15, Onlypul 30, Onlypul 45 and Onlypul 60)



Semi-automatic

Continuous tube extraction



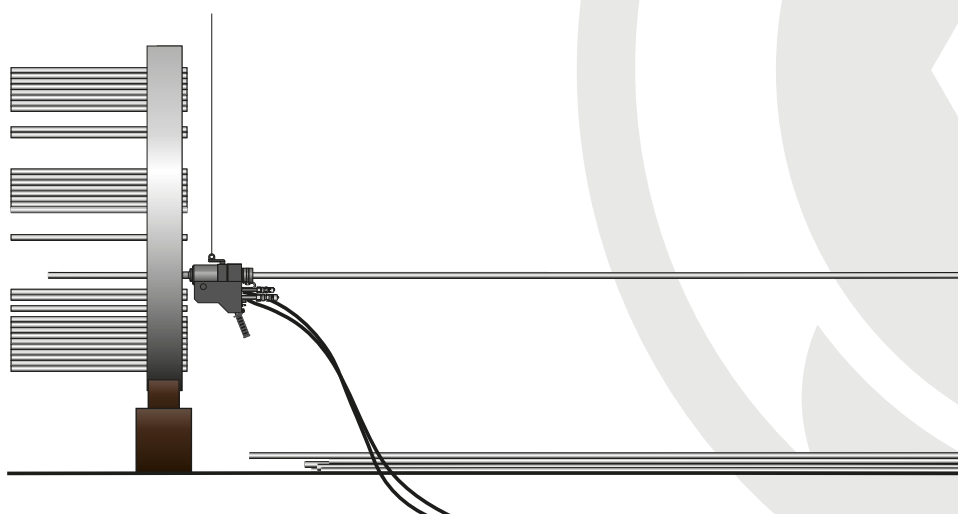
Entry level

For small-scale maintenance operations



Economico

Full equipment at reduced cost



The extraction process

La procedura di estrazione consiste nelle seguenti fasi:

- Select the correct tools (TPC thrust collar, TPJ tightening jaw and TPM extraction mandrel) according to the dimensions of the tube to be extracted
- Mount the TPC thrust collar and TPJ tightening jaw onto the ONLYPUL hydraulic puller
- Screw the TPM extraction mandrel into the tube inlet using the TPA pneumatic screwdriver and TPS reduction coupling (Pic. A)
- Position the ONLYPUL hydraulic puller onto the TPM extraction mandrel until the TPC collar is in contact with the tube plate (Pic. B)
- Proceed with the tube extraction. In the first extraction phase, the TPJ jaws will clamp the TPM mandrel (Fig. C)
- In the following steps, the TPJ extraction jaws will clamp the tube until it is fully extracted (Fig. D)

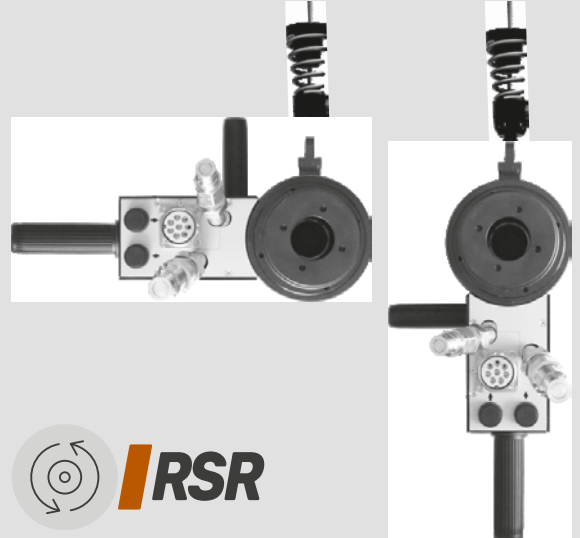


Features that make the difference



RC24

The RC24 remote control beside the knobs simplifies the working steps. In the electric version it is powered at a low voltage of 24 Volts.



RSR

The Revolving Support Ring on which ONLYPUL is suspended allows optimal positioning in the tightest spaces.

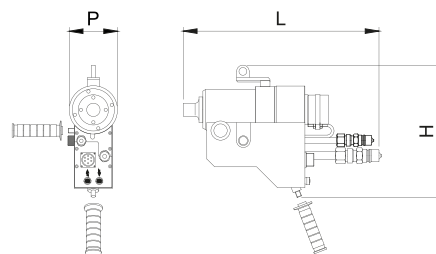
HPHH

High Pressure Hydraulic Hoses

High Pressure Hydraulic Hoses are 6 m (19.7 ft) long and certified for use up to 350 bar (5075 psi). They are equipped with FLAT fittings that reduce dripping during connection and disconnection from Onlypul and the TP10 hydraulic power unit. They are also equipped with safety systems that prevent a whip effect in the event of a broken hose-fitting connection.



Electric version



Onlypul 15 EM

- > Tube (*min* < *de* > *max*) 9,5 ÷ 28,6 mm - 3/8" ÷ 1.1/8"
- > Maximum extraction force 15000 Kg / 33000 lb
- > Stroke 101,6 mm / 4"
- > Dimensions:
 - Width *L*: 500 mm / 19.7"
 - Depth *P*: 125 mm / 4.9"
 - Height *H*: 340 mm / 13.4"
- > Remote control supply 24 V
- > Weight 21 Kg / 46.2 lb

Onlypul 30 EM

- > Tube (*min* < *de* > *max*) 9,5 ÷ 42,4 mm - 3/8" ÷ 1.1/4" GAS
- > Maximum extraction force 30000 Kg / 66000 lb
- > Stroke 101,6 mm / 4"
- > Dimensions:
 - Width *L*: 500 mm / 19.7"
 - Depth *P*: 155 mm / 6.1"
 - Height *H*: 430 mm / 16.9"
- > Remote control supply 24 V
- > Weight 38 Kg / 83.6 lb

Onlypul 45 EM

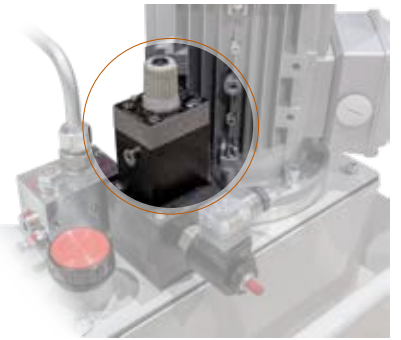
- > Tube (*min* < *de* > *max*) 25,4 ÷ 76,2 mm - 1" ÷ 3"
- > Maximum extraction force 45000 Kg / 99000 lb
- > Stroke 50,8 mm / 2"
- > Dimensions:
 - Width *L*: 510 mm / 20.1"
 - Depth *P*: 190 mm / 7.5"
 - Height *H*: 430 mm / 16.9"
- > Remote control supply 24 V
- > Weight 55 Kg / 121.2 lb

Onlypul 60 EM

- > Tube (*min* < *de* > *max*) 50,8 ÷ 101,6 mm - 2" ÷ 4"
- > Maximum extraction force 60000 Kg / 132000 lb
- > Stroke 50,8 mm / 2"
- > Dimensions:
 - Width *L*: 510 mm / 20.1"
 - Depth *P*: 220 mm / 8.7"
 - Height *H*: 450 mm / 17.7"
- > Remote control supply 24 V
- > Weight 71 Kg / 156.5 lb

Power unit coupling

The electric version of the Onlypul tube puller is combined with the TP10EVV power unit, though it can also be used in combination with the TP30EPF power unit.



Flow Rate Adjustment Valve

The Flow Rate Adjustment Valve is required to regulate the flow of hydraulic oil to ensure the best gripping of the jaw in the tube when using the TP10EVV power unit with Grippul 11E and Grippul 21E

TP10EVV

Semi-automated hydraulic electric power unit

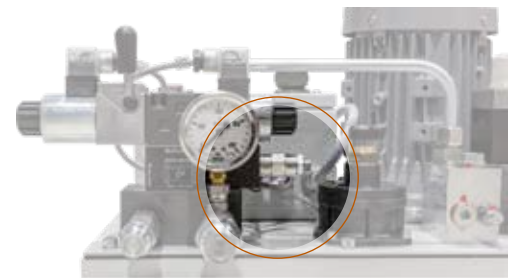
- > Max pressure: 350 bar/5075 psi
- > Oil flow:

Lt/min (bar)	US/gpm (psi)
12 (0÷70)	3.17 (0÷1015 psi)
0,9 (70÷350)	0.24 (1015÷5075 psi)
- > Hydraulic oil (not included): 30Lt/8 US Gallon - Viscosità 46
- > Supply: 1,1 Kw-230/400V-50/60 Hz-3 phase
- > Remote power control supply: 24V
- > IP: 30
- > Dimensions:

Width: 680 mm / 26.8"
Depth: 500 mm / 19.7"
Height: 720 mm / 28.3"
- > Weight (without hydraulic oil): 86 Kg / 189 lb
- > Crate (power unit + Onlypul transport case)



Width:	113 cm / 3.70 ft
Depth:	93 cm / 3.05 ft
Height:	96 cm / 3.15 ft
Weight:	211 Kg / 465 lb

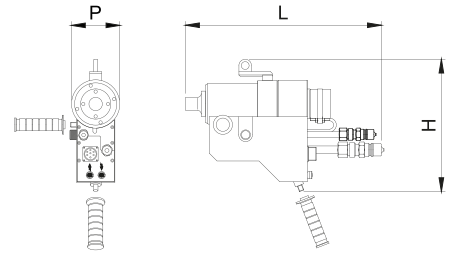


Pressure Adjustment Valve

The Pressure Adjustment Valve is required to adjust the maximum hydraulic oil pressure when using a TP10EVV power unit with KATTEX 6E and KATTEX 12E hydraulic tube cutters



Pneumatic version



Onlypul 15 PM

- > Tube (*min* < *de* > *max*) 9,215 ÷ 28,6 mm - 3/8" ÷ 1.1/8"
- > Maximum extraction force 15000 Kg / 33000 lb
- > Stroke 101,6 mm / 4"
- > Dimensions:
 - Width *L*: 500 mm / 19.7"
 - Depth *P*: 125 mm / 4.9"
 - Height *H*: 340 mm / 13.4"
- > Remote control supply 24 V
- > Weight 21 Kg / 46.2 lb

Onlypul 30 PM

- > Tube (*min* < *de* > *max*) 9,5 ÷ 42,4 mm - 3/8" ÷ 1.1/4"
- > Maximum extraction force 30000 Kg / 66000 lb
- > Stroke 101,6 mm / 4"
- > Dimensions:
 - Width *L*: 500 mm / 19.7"
 - Depth *P*: 155 mm / 6.1"
 - Height *H*: 430 mm / 16.9"
- > Remote control supply 24 V
- > Weight 38 Kg / 83.6 lb

Onlypul 45 PM

- > Tube (*min* < *de* > *max*) 25,4 ÷ 76,2 mm - 1" ÷ 3"
- > Maximum extraction force 45000 Kg / 99000 lb
- > Stroke 50,8 mm / 2"
- > Dimensions:
 - Width *L*: 510 mm / 20.1"
 - Depth *P*: 190 mm / 7.5"
 - Height *H*: 430 mm / 16.9"
- > Remote control supply 24 V
- > Weight 55 Kg / 121.2 lb

Onlypul 60 PM

- > Tube (*min* < *de* > *max*) 50,8 ÷ 101,6 mm - 2" ÷ 4"
- > Maximum extraction force 60000 Kg / 132000 lb
- > Stroke 50,8 mm / 2"
- > Dimensions:
 - Width *L*: 510 mm / 20.1"
 - Depth *P*: 220 mm / 8.7"
 - Height *H*: 450 mm / 17.7"
- > Remote control supply 24 V
- > Weight 71 Kg / 156.5 lb

Power unit coupling

The electric version of the Onlypul tube puller is combined with the TP10EVV power unit, though it can also be used in combination with the TP30EPF power unit.



TP10PVV

Semi-automatic hydraulic pneumatic power unit

- > Max pressure: 350 bar / 5075 psi
- > Oil flow:

Lt/min (bar)	US/gpm (psi)
12 (0÷70)	3.17 (0÷1015 psi)
0,9 (70÷350)	0,24 (1015÷5075 psi)
- > Hydraulic oil (not included): 30Lt/8 US Gallon - Viscosità 46
- > Motor power: 1,7 Kw - 7 bar (100 psi)
- > Air consumption: 1900 Lt/min (67 Cfm) - 7 bar / 100 psi
- > Dimensions:

Width: 680 mm / 26.8"
Depth: 500 mm / 19.7"
Height: 600 mm / 23.6"
- > Weight (without hydraulic oil): 67,5 Kg / 149 lb
- > Crate (power unit + Onlypul transport case)



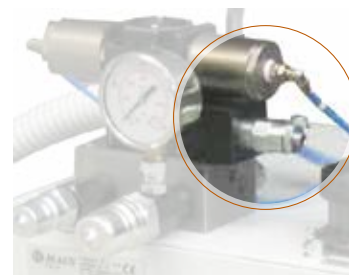
Width:	113 cm / 3.70 ft
Depth:	93 cm / 3.05 ft
Height:	96 cm / 3.15 ft
Weight:	192 Kg / 423 lb



FRAV

Flow Rate Adjustment Valve

The Flow Rate Adjustment Valve is required to regulate the flow of hydraulic oil to ensure the best gripping of the jaw in the tube when using the TP10PVV power unit with Grippul 11P and Grippul 21P



PAV

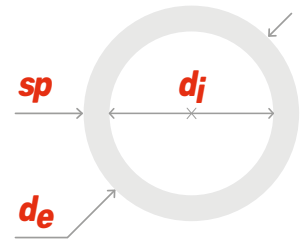
Pressure Adjustment Valve

The Pressure Adjustment Valve is required to adjust the maximum hydraulic oil pressure when using a TP10PVV power unit with KATTEX 6P and KATTEX 12P hydraulic tube cutters



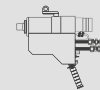
Extraction mandrel for tubes from 3/8" (9,5mm) to 2.1/2" (63,5mm)

Tube features				Mandrel <input checked="" type="checkbox"/>	
d_e	sp	d_i			
inches mm	B.W.G	mm	inches	Cod.	In.
3/8" (9,5)	17 ÷ 19	6,5 ÷ 7,5	0.256 ÷ 0.295	TPM-7	5/16"
	20 ÷ 24	7,5 ÷ 8,5	0.295 ÷ 0.335	TPM-8	
1/2" (12,7)	14 ÷ 16	8,5 ÷ 9,5	0.335 ÷ 0.374	TPM-9	3/8"
	17 ÷ 18	9,5 ÷ 10,5	0.374 ÷ 0.413	TPM-10	
	19 ÷ 21	10,5 ÷ 11,5	0.413 ÷ 0.453	TPM-11	
	24	11,5 ÷ 12,5	0.453 ÷ 0.492	TPM-12	
5/8" (15,9)	12 ÷ 13	10,3 ÷ 11,1	0.407 ÷ 0.435	TPM-11A	1/2"
	14 ÷ 15	11,7 ÷ 12,2	0.459 ÷ 0.481	TPM-12A	
	16 ÷ 17	12,5 ÷ 13,5	0.492 ÷ 0.531	TPM-13A	
	19 ÷ 21	13,5 ÷ 14,5	0.531 ÷ 0.571	TPM-14A	
3/4" (19,0)	11	12,5 ÷ 13,5	0.492 ÷ 0.531	TPM-13	5/8"
	12 ÷ 13	13,5 ÷ 14,5	0.531 ÷ 0.571	TPM-14	
	14 ÷ 15	14,5 ÷ 15,5	0.571 ÷ 0.610	TPM-15	
	16 ÷ 17	15,5 ÷ 16,5	0.610 ÷ 0.650	TPM-16	
	18 ÷ 20	16,5 ÷ 17,5	0.650 ÷ 0.689	TPM-17	
	21 ÷ 24	17,5 ÷ 18,5	0.689 ÷ 0.728	TPM-18	
7/8" (22,2)	14	17,5 ÷ 18,5	0.689 ÷ 0.728	TPM-18S	5/8"
	16 ÷ 17	18,5 ÷ 19,5	0.728 ÷ 0.768	TPM-19S	
	18 ÷ 19	19,5 ÷ 20,5	0.768 ÷ 0.807	TPM-20S	
1" (25,4)	10 ÷ 11	18,5 ÷ 19,5	0.728 ÷ 0.768	TPM-19	3/4"
	12	19,5 ÷ 20,5	0.768 ÷ 0.807	TPM-20	
	13 ÷ 14	20,5 ÷ 21,5	0.807 ÷ 0.846	TPM-21	
	15 ÷ 16	21,5 ÷ 22,5	0.846 ÷ 0.886	TPM-22	
	18	22,5 ÷ 23,5	0.886 ÷ 0.925	TPM-23	
	19 ÷ 20	23,5 ÷ 24,5	0.925 ÷ 0.965	TPM-24	
	23 ÷ 24	24,5 ÷ 25,4	0.956 ÷ 1.004	TPM-25	
3/4" Gas(26,9)	13	21,5 ÷ 22,5	0.846 ÷ 0.886	TPM-22G	3/4"
	14 ÷ 15	22,5 ÷ 23,5	0.886 ÷ 0.925	TPM-23G	
	16 ÷ 17	23,5 ÷ 24,5	0.925 ÷ 0.965	TPM-24G	
	19 ÷ 21	24,5 ÷ 25,4	0.956 ÷ 1.004	TPM-25G	
	11 ÷ 12	25,5 ÷ 26,5	1.004 ÷ 1.043	TPM-26	
	13	26,5 ÷ 27,5	1.043 ÷ 1.083	TPM-27	
1.1/4" (31,8)	14 ÷ 15	27,5 ÷ 28,5	1.083 ÷ 1.112	TPM-28	1"
	16 ÷ 18	28,5 ÷ 29,5	1.112 ÷ 1.161	TPM-29	
	19 ÷ 22	29,5 ÷ 30,5	1.161 ÷ 1.201	TPM-30	
	23 ÷ 24	30,5 ÷ 31,5	1.201 ÷ 1.240	TPM-31	
	9	25,5 ÷ 26,5	1.004 ÷ 1.043	TPM-26G	
1" Gas (33,7)	10	26,5 ÷ 27,5	1.043 ÷ 1.063	TPM-27G	1"
	11	27,5 ÷ 28,5	1.083 ÷ 1.122	TPM-28G	
	13 ÷ 14	28,5 ÷ 29,5	1.122 ÷ 1.161	TPM-29G	



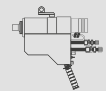
Dimensions fit for

Onlypul 15



Dimensions fit for

Onlypul 30

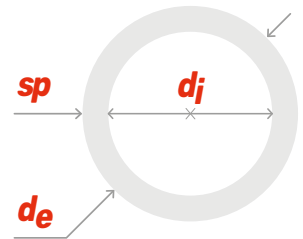


Dimensions fit for

Onlypul 45



Tube features				Mandrel <input checked="" type="checkbox"/>	
d_e	sp	d_i			
inches mm	B.W.G	mm	inches	Cod.	In.
1.1/2" (38,1)	10 ÷ 11	31,5 ÷ 32,5	1.240 ÷ 1.280	TPM-32	1"
	12 ÷ 13	32,5 ÷ 33,5	1.280 ÷ 1.319	TPM-33	
	14	33,5 ÷ 34,5	1.319 ÷ 1.358	TPM-34	
	15 ÷ 17	34,5 ÷ 35,5	1.358 ÷ 1.398	TPM-35	
	18 ÷ 20	35,5 ÷ 36,5	1.398 ÷ 1.437	TPM-36	
1.1/4" Gas (42,4)	21 ÷ 24	36,5 ÷ 37,5	1.437 ÷ 1.280	TPM-37	1"
	12	36,5 ÷ 37,5	1.437 ÷ 1.476	TPM-37G	
	15 ÷ 16	37,5 ÷ 38,5	1.476 ÷ 1.516	TPM-38G	
	14 ÷ 16	38,5 ÷ 39,5	1.516 ÷ 1.555	TPM-39G	
	17 ÷ 19	39,5 ÷ 40,5	1.555 ÷ 1.594	TPM-40G	
1.3/4" (44,4)	20 ÷ 24	40,5 ÷ 41,5	1.594 ÷ 1.634	TPM-41G	1"
	10 ÷ 11	37,5 ÷ 38,5	1.476 ÷ 1.516	TPM-38/44	
	12	38,5 ÷ 39,5	1.516 ÷ 1.555	TPM-39/44	
	13 ÷ 14	39,5 ÷ 40,5	1.555 ÷ 1.594	TPM-40/44	
	15 ÷ 16	40,5 ÷ 41,5	1.594 ÷ 1.634	TPM-41/44	
1.1/2" Gas (48,3)	18 ÷ 19	41,5 ÷ 42,5	1.634 ÷ 1.673	TPM-42/44	1"
	20 ÷ 24	42,5 ÷ 43,5	1.673 ÷ 1.713	TPM-43/44	
	11 ÷ 12	42,5 ÷ 43,5	1.673 ÷ 1.713	TPM-43G	
	13 ÷ 14	43,5 ÷ 44,5	1.713 ÷ 1.752	TPM-44G	
	15 ÷ 17	44,5 ÷ 45,5	1.752 ÷ 1.791	TPM-45G	
2" (50,8)	18 ÷ 19	45,5 ÷ 43,5	1.791 ÷ 1.831	TPM-46G	1"
	10	43,5 ÷ 44,5	1.713 ÷ 1.752	TPM-44/51	
	11 ÷ 12	44,5 ÷ 45,5	1.752 ÷ 1.791	TPM-45/51	
	13	45,5 ÷ 46,5	1.791 ÷ 1.831	TPM-46/51	
	14 ÷ 15	46,5 ÷ 47,5	1.831 ÷ 1.870	TPM-47/51	
2.1/4" (57,1)	16 ÷ 18	47,5 ÷ 48,5	1.870 ÷ 1.909	TPM-48/51	1.1/2"
	19 ÷ 22	48,5 ÷ 21,5	1.909 ÷ 1.949	TPM-49/51	
	9 ÷ 10	49,5 ÷ 50,5	1.949 ÷ 1.985	TPM-50/57	
2" Gas (60,3)	11	50,5 ÷ 51,5	1.985 ÷ 1.476	TPM-51/57	1.1/2"
	12 ÷ 13	51,5 ÷ 52,5	2.028 ÷ 2.067	TPM-52/57	
	7	50,5 ÷ 51,5	1.999 ÷ 2.029	TPM-51G	
2.1/2" (63,5)	8	51,5 ÷ 52,5	2.028 ÷ 2.057	TPM-52G	1.1/2"
	9	52,5 ÷ 53,5	2.067 ÷ 2.105	TPM-53G	
	7	53,5 ÷ 54,4	2.105 ÷ 2.145	TPM-54/63	
	8	54,5 ÷ 55,4	2.145 ÷ 2.185	TPM-55/63	1.1/2"
	9	55,5 ÷ 56,5	2.185 ÷ 2.224	TPM-56/63	
	10	56,5 ÷ 57,5	2.224 ÷ 2.264	TPM-57/63	



Dimensions fit for
Onlypul 30

Dimensions fit for
Onlypul 45

Dimensions fit for
Onlypul 60

Jaw TPJ



<i>de</i>	Onlypul 15	Onlypul 30	Onlypul 45	Onlypul 60
<i>inches</i>	<i>Cod.</i>	<i>Cod.</i>	<i>Cod.</i>	<i>Cod.</i>
3/8"	TPJ/15-1	TPJ/30-1	-	-
1/2"	TPJ/15-2	TPJ/30-2	-	-
5/8"	TPJ/15-3	TPJ/30-3	-	-
3/4"	TPJ/15-4	TPJ/30-4	-	-
7/8"	TPJ/15-4/A	TPJ/30-4/A	-	-
1"	TPJ/15-5	TPJ/30-5	TPJ/45-5	-
3/4" Gas	-	TPJ/30-6	TPJ/45-6	-
1.1/4"	-	TPJ/30-7	TPJ/45-7	-
1" Gas	-	TPJ/30-8	TPJ/45-8	-
1.1/2"	-	TPJ/30-9	TPJ/45-9	-
1.1/4" Gas	-	TPJ/30-10	TPJ/45-10	-
1.3/4"	-	-	TPJ/45-11	-
1.1/2" Gas	-	-	TPJ/45-12	-
2"	-	-	TPJ/45-13	TPJ/60-13
2.1/4"	-	-	TPJ/45-14	TPJ/60-14
2" Gas	-	-	TPJ/45-15	TPJ/60-15
2.1/2"	-	-	TPJ/45-16	TPJ/60-16
3"	-	-	TPJ/45-17	TPJ/60-17
3.1/2"	-	-	-	TPJ/60-18
4"	-	-	-	TPJ/60-19

TPC Collars



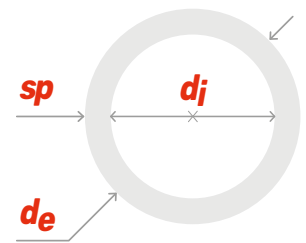
<i>de</i>	Onlypul 15	Onlypul 30	Onlypul 45	Onlypul 60
<i>inches</i>	<i>Cod.</i>	<i>Cod.</i>	<i>Cod.</i>	<i>Cod.</i>
3/8"	TPC-11	TPC-11	-	-
1/2"	TPC-14	TPC-14	-	-
5/8"	TPC-18	TPC-18	-	-
3/4"	TPC-21	TPC-21	-	-
7/8"	TPC-25	TPC-25	-	-
1"	TPC-28	TPC-28	TPC-28	-
3/4" Gas	-	TPC-31	TPC-31	-
1.1/4"	-	TPC-34	TPC-34	-
1" Gas	-	TPC-37	TPC-37	-
1.1/2"	-	TPC-41	TPC-41	-
1.1/4" Gas	-	TPC-44	TPC-44	-
1.3/4"	-	-	TPC/45-48	-
1.1/2" Gas	-	-	TPC/45-53	-
2"	-	-	TPC/45-56	TPC/60-56
2.1/4"	-	-	TPC/45-60	TPC/60-60
2" Gas	-	-	TPC/45-63	TPC/60-63
2.1/2"	-	-	TPC/45-66	TPC/60-66
3"	-	-	TPC/45-80	TPC/60-80
3.1/2"	-	-	-	TPC/60-93
4"	-	-	-	TPC/60-105



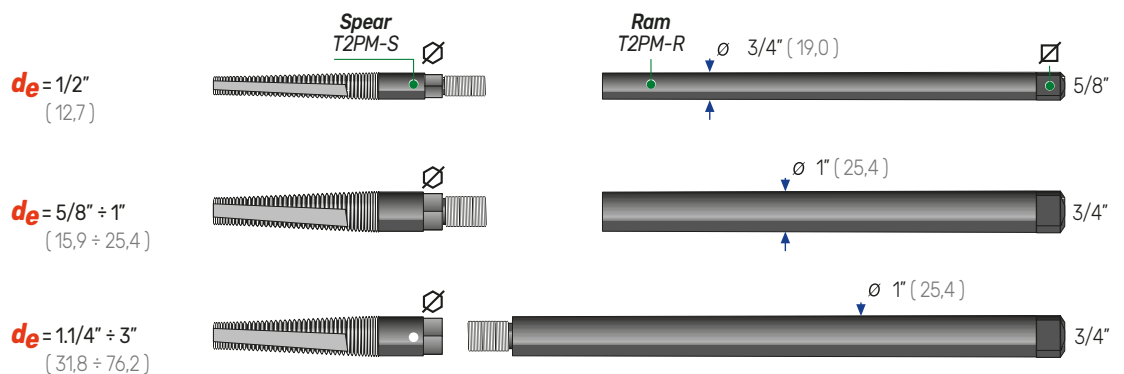
Quick gripping extraction mandrel for tubes from 38,1 mm (1.1/2") to 101,6 mm (4").

An exclusive Maus Italia-designed extraction spear: used in combination with the Rumpul puller allows for a rapid tube extraction without the need for tightening with a screwer (no screwer or specific keys required).

Tube		Mandrel	Cone	Jaw	Extension			
<i>d_e</i>	<i>sp</i>	<i>d_i</i>						
inches mm	B.W.G	mm	inches	Cod.	Inches / mm	Cod.	Cod.	Cod.
1.1/2" (38,1)	10 ÷ 11	31,5 ÷ 32,5	1.240 ÷ 1.280	TPM-K-32	CK-32÷37	JK-32	RK-32÷37	1.1/4"
	12 ÷ 13	32,5 ÷ 33,5	1.280 ÷ 1.319	TPM-K-33		JK-33		
	14	33,5 ÷ 34,5	1.319 ÷ 1.358	TPM-K-34		JK-34		
	15 ÷ 17	34,5 ÷ 35,5	1.358 ÷ 1.397	TPM-K-35		JK-35		
	18 ÷ 20	35,5 ÷ 36,5	1.397 ÷ 1.437	TPM-K-36		JK-36		
	21 ÷ 24	36,5 ÷ 37,5	1.437 ÷ 1.476	TPM-K-37		JK-37		
1.3/4" (44,4)	10 ÷ 11	37,5 ÷ 38,5	1.476 ÷ 1.516	TPM-K-38	CK-38÷43	JK-38	RK-38÷43	1.1/4"
	12	38,5 ÷ 39,5	1.516 ÷ 1.555	TPM-K-39		JK-39		
	13 ÷ 14	39,5 ÷ 40,5	1.555 ÷ 1.594	TPM-K-40		JK-40		
	15 ÷ 16	40,5 ÷ 41,5	1.594 ÷ 1.673	TPM-K-41		JK-41		
	18 ÷ 19	41,5 ÷ 42,5	1.634 ÷ 1.673	TPM-K-42		JK-42		
	20 ÷ 24	42,5 ÷ 43,5	1.673 ÷ 1.713	TPM-K-43		JK-43		
2" (50,8)	10	43,5 ÷ 44,5	1.713 ÷ 1.752	TPM-K-44	CK-44÷49	JK-44	RK-44÷49	1.1/4"
	11 ÷ 12	44,5 ÷ 45,5	1.752 ÷ 1.791	TPM-K-45		JK-45		
	13	45,5 ÷ 46,5	1.791 ÷ 1.831	TPM-K-46		JK-46		
	14 ÷ 15	46,5 ÷ 47,5	1.831 ÷ 1.870	TPM-K-47		JK-47		
	16 ÷ 18	47,5 ÷ 48,5	1.870 ÷ 1.909	TPM-K-48		JK-48		
	19 ÷ 22	48,5 ÷ 49,5	1.909 ÷ 1.949	TPM-K-49		JK-49		
2.1/4" (57,1)	9 ÷ 10	49,5 ÷ 50,5	1.949 ÷ 1.988	TPM-K-50	CK-50÷52	JK-50	RK-50÷52	1.1/2"
	11	50,5 ÷ 51,5	1.988 ÷ 2.028	TPM-K-51		JK-51		
	12 ÷ 13	51,5 ÷ 52,5	2.028 ÷ 2.067	TPM-K-52		JK-52		
2.1/2" (63,5)	7	53,5 ÷ 54,5	2.106 ÷ 2.146	TPM-K-54	CK-54÷57	JK-54	RK-54÷57	1.1/2"
	8	54,5 ÷ 55,5	2.146 ÷ 2.185	TPM-K-55		JK-55		
	9	55,5 ÷ 56,5	2.185 ÷ 2.224	TPM-K-56		JK-56		
	10	56,5 ÷ 57,5	2.224 ÷ 2.264	TPM-K-57		JK-57		
3" (76,2)	7	66,5 ÷ 67,5	2.618 ÷ 2.667	TPM-K-67	CK-67÷70	JK-67	RK-67÷70	1.3/4"
	8	67,5 ÷ 68,5	2.657 ÷ 2.697	TPM-K-68		JK-68		
	9 ÷ 10	68,5 ÷ 69,5	2.697 ÷ 2.736	TPM-K-69		JK-69		
	11	69,5 ÷ 70,5	2.736 ÷ 2.776	TPM-K-70		JK-70		
3.1/2" (88,9)	6	78,5 ÷ 79,5	3.091 ÷ 3.130	TPM-K-79	CK-79÷82	JK-79	RK-79÷82	1.3/4"
	7	79,5 ÷ 80,5	3.130 ÷ 3.169	TPM-K-80		JK-80		
	8 ÷ 9	80,5 ÷ 81,5	3.169 ÷ 3.209	TPM-K-81		JK-81		
	10	81,5 ÷ 82,5	3.209 ÷ 3.248	TPM-K-82		JK-82		
4" (101,6)	6	91,5 ÷ 92,5	3.602 ÷ 3.642	TPM-K-92	CK-92÷95	JK-92	RK-92÷95	1.3/4"
	7 ÷ 8	92,5 ÷ 93,5	3.642 ÷ 3.681	TPM-K-93		JK-93		
	9	93,5 ÷ 94,5	3.681 ÷ 3.720	TPM-K-94		JK-94		
	10	94,5 ÷ 95,5	3.720 ÷ 3.760	TPM-K-95		JK-95		



Tube features				Mandrel	Extension	Jaw	Cone	
d_e		sp	d_{im}					
inches	mm	B.W.G	mm	inches	Cod.	Inches mm	Cod.	Cod.
1/2" (12,7)	14 ÷ 16	8,5 ÷ 9,5	0.335 ÷ 0.374	T2PM-S9	17 0.669	T2PM-R9÷12	TPJ/15-4 TPJ/30-4	TPC/21
	17 ÷ 18	9,5 ÷ 10,5	0.374 ÷ 0.413	T2PM-S10				
	19 ÷ 21	10,5 ÷ 11,5	0.413 ÷ 0.453	T2PM-S11				
	24	11,5 ÷ 12,5	0.453 ÷ 0.492	T2PM-S12				
5/8" (15,9)	16 ÷ 17	12,5 ÷ 13,5	0.492 ÷ 0.531	T2PM-S13	22 0.866	T2PM-R13÷24	TPJ/15-5 TPJ/30-5	TPC/28
	19 ÷ 21	13,5 ÷ 14,5	0.531 ÷ 0.571	T2PM-S14				
	23 ÷ 24	14,5 ÷ 13,5	0.571 ÷ 0.610	T2PM-S15				
3/4" (19,0)	11	12,5 ÷ 14,5	0.492 ÷ 0.531	T2PM-S13	22 0.866	T2PM-R13÷24	TPJ/15-5 TPJ/30-5	TPC/28
	12 ÷ 13	13,5 ÷ 15,5	0.531 ÷ 0.571	T2PM-S14				
	14 ÷ 15	14,5 ÷ 13,5	0.571 ÷ 0.610	T2PM-S15				
	16 ÷ 17	15,5 ÷ 14,5	0.610 ÷ 0.650	T2PM-S16				
	18 ÷ 20	16,5 ÷ 15,5	0.650 ÷ 0.689	T2PM-S17				
	21 ÷ 24	17,5 ÷ 18,5	0.689 ÷ 0.728	T2PM-S18				
7/8" (22,2)	14	17,5 ÷ 18,5	0.689 ÷ 0.728	T2PM-S18	22 0.866	T2PM-R13÷24	TPJ/15-5 TPJ/30-5	TPC/28
	16 ÷ 17	18,5 ÷ 19,5	0.728 ÷ 0.768	T2PM-S19				
	18 ÷ 19	19,5 ÷ 20,5	0.768 ÷ 0.807	T2PM-S20				
1" (25,4)	10 ÷ 11	18,5 ÷ 19,5	0.728 ÷ 0.768	T2PM-S19	22 0.866	T2PM-R13÷24	TPJ/15-5 TPJ/30-5	TPC/28
	12	19,5 ÷ 20,5	0.768 ÷ 0.807	T2PM-S20				
	13 ÷ 14	20,5 ÷ 21,5	0.807 ÷ 0.846	T2PM-S21				
	15 ÷ 16	21,5 ÷ 22,5	0.846 ÷ 0.886	T2PM-S22				
	18	22,5 ÷ 23,5	0.886 ÷ 0.925	T2PM-S23				
	19 ÷ 20	23,5 ÷ 24,5	0.925 ÷ 0.965	T2PM-S24				



Tube features				Mandrel	Extension	Jaw	Cone		
d_e		sp	d_{im}						
inches	mm	B.W.G	mm	inches	Cod.	Inches mm	Cod.	Cod.	Cod.
1.1/4" (31,8)	10	24,5 ÷ 25,5	0.956 ÷ 1.004	T2PM-S25	30 1.181	T2PM-R25÷48	TPJ/30-5	TPC/34/200	
	11 ÷ 12	25,5 ÷ 26,5	1.004 ÷ 1.043	T2PM-S26					
	13	25,5 ÷ 26,5	1.043 ÷ 1.083	T2PM-S27					
	14 ÷ 15	27,5 ÷ 28,5	1.083 ÷ 1.112	T2PM-S28					
	16 ÷ 18	28,5 ÷ 29,5	1.112 ÷ 1.161	T2PM-S29					
	19 ÷ 22	29,5 ÷ 30,5	1.161 ÷ 1.201	T2PM-S30					
	23 ÷ 24	30,5 ÷ 31,5	1.201 ÷ 1.240	T2PM-S31					
1.1/2" (38,1)	10 ÷ 11	31,5 ÷ 32,5	1.240 ÷ 1.280	T2PM-S32	30 1.181	T2PM-R25÷48	TPJ/30-5	TPC/45/200	
	12 ÷ 13	32,5 ÷ 33,5	1.280 ÷ 1.319	T2PM-S33					
	14	33,5 ÷ 34,5	1.319 ÷ 1.358	T2PM-S34					
	15 ÷ 17	34,5 ÷ 35,5	1.358 ÷ 1.398	T2PM-S35					
	18 ÷ 20	35,5 ÷ 36,5	1.398 ÷ 1.437	T2PM-S36					
	21 ÷ 24	36,5 ÷ 37,5	1.437 ÷ 1.476	T2PM-S37					
1.3/4" (44,4)	10 ÷ 11	37,5 ÷ 38,5	1.476 ÷ 1.516	T2PM-S38	30 1.181	T2PM-R25÷48	TPJ/30-5	TPC/45/200	
	12	38,5 ÷ 39,5	1.516 ÷ 1.555	T2PM-S39					
	13 ÷ 14	39,5 ÷ 40,5	1.555 ÷ 1.594	T2PM-S40					
	15 ÷ 16	40,5 ÷ 41,5	1.594 ÷ 1.634	T2PM-S41					
2" (50,8)	10	43,5 ÷ 44,5	1.713 ÷ 1.752	T2PM-S44	30 1.181	T2PM-R25÷48	TPJ/30-5	TPC/56/200	
	11 ÷ 12	44,5 ÷ 45,5	1.752 ÷ 1.791	T2PM-S45					
	14 ÷ 15	46,5 ÷ 47,5	1.831 ÷ 1.870	T2PM-S47					
	16 ÷ 18	47,5 ÷ 48,5	1.870 ÷ 1.909	T2PM-S48					
2.1/2" (63,5)	9	55,5 ÷ 56,5	2.185 ÷ 2.224	T2PM-S56	30 1.181	T2PM-R25÷48	TPJ/30-5	TPC/80/200	
3" (76,2)	9 ÷ 10	68,5 ÷ 69,5	2.697 ÷ 2.736	T2PM-S59					





Equipment

- > Transport case
- > Onlypul hydraulic puller
- > N°2 hydraulic hoses (length: 6m)
- > Set of spares gaskets
- > Set of series keys
- > Instruction manual



Transport case



Onlypul tube puller



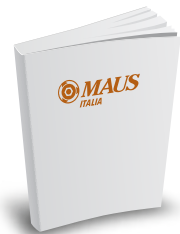
N°2 hydraulic hoses



Set of spare gaskets



Set of service keys



Instruction manual



All the accessories offered by Maus Italia to support the Onlypul series tube extraction equipment.

Accessories

TPA

Pneumatic impact wrench

Pneumatic impact wrench for quick and safe insertion of the TPM spear before each extraction. The TPA screwdriver is supplied in a practical and handy carrying case complete with connecting tubes and service keys.



Model	TPM	Working pressure		Air connect	A	Weight	
		bar	Psi			Kg	Lb
TPA 1	TPM 7 ÷ TPM 15 A	6,3	91.4	3/8" Gas	3/4"	5	10.8
TPA 2	TPM 13 ÷ TPM 20 S	6,3	91.4	1/2" Gas	1"	6,3	13.8
TPA 3A	TPM 19 ÷ TPM 37	6,3	91.4	1/2" Gas	1"	9,3	20.6
TPA 4	TPM 37 G ÷ TPM 49/51	6,3	91.4	1/2" Gas	1"	15,0	32.9
TPA 5	TPM 50/57 ÷ TPM 57/63	6,3	91.4	3/4" Gas	1.1/2"	32,0	70.55

TPS

Adapter

Adapter between the TPA impact wrench and the TPM spear to be mounted, available in different sizes as required.



Model	TPA	TPM
	A	B
TPS 1B	3/4"	5/16"
TPS 2B	3/4"	3/8"
TPS 3B	3/4"	1/2"
TPS 3A	1"	1/2"
TPS 4	1"	5/8"
TPS 5	1"	3/4"
TPS 6	1"	1"
TPS 6A	1"	1.1/2"
TPS 7	1.1/2"	1"
TPS 8	1.1/2"	1.1/2"

TPB

Balancer

Model	Balancer	Range
Onlypul 15	TPB15	25-30 Kg / 55-66 lb
Onlypul 30	TPB30	45-55 Kg / 99-121 lb
Onlypul 45	TPB45	55-65 Kg / 121-143 lb
Onlypul 60	TPB60	100-120 Kg / 220-265 lb



Heat exchanger's world

MAUS ITALIA SPA IS THE WORLD LEADING MANUFACTURER OF TOOLS AND MACHINES FOR THE PRODUCTION AND MAINTENANCE OF HEAT EXCHANGERS



Maus Italia S.p.A.

SP 415 KM 30 (nuova strada di arrocco)
26010 Bagnolo Cremasco (CR) Italy
PIVA: 00141010199

Telefono: +39 0373 2370

expo@mausitalia.it
www.mausitalia.it





mausitalia.it